

ADVANCE ADAPTERS INC.

P.O. Box 247, 4320 Aerotech Center Way

Paso Robles, CA 93447

Telephone: (800) 350-2223 Fax: (805) 238-4201

P/N: 712534

PAGE 1 OF 2

Page Rev. Date: 10-20-10

JEEP T176 4 SPEED TRANSMISSION TO CHEVY & BUICK ENGINES

KIT CONSISTS OF:

No.	Qty	Part No.	Description
1.	1	711534	ADAPTERCASTING
2.	1	716046	BEARINGRETAINER
3.	1	716170	PILOTBUSHING
4.	1	716731	SEAL (<i>National #481792</i>)
5.	4	723137	S.H.C.S.5/16"-18x1"LONG
6.	2	725013	S.H.C.S.1/2"-13x2"LONG
7.	1	725016	S.H.C.S.1/2"-13x1-1/2"LONG
8.	2	725026	F.H.C.S.1/2"-13x1-1/2"LONG
9.	1	JP001	JEEPINSTRUCTIONMANUAL

OPTIONAL ITEMS:

Qty	Part No.	Description
1	716176	CLUTCHREL.ARM
1	716638	CLUTCHBRACKET
1	N1430	RELEASEBEARING

INSTALLATION INSTRUCTIONS:

The input shaft of the stock Jeep 4 speed has a clutch spline of 1-1/8"-10 and is common to all Chevy products. When using a Chevy engine, a Chevy clutch disc and pressure pate will be required. The bellhousing must be the car-type with the small register hole of 4.686". Since the input shaft is slightly different, a special pilot bushing has been supplied with the kit. Make sure that the contact into the pilot bushing is correct before final assembly. Make sure that the clutch splines are fully engaged with the input shaft. We have experienced a few applications where the tip of the input shaft needed shortening in order to prevent it from bottoming out in the bottom of the engine crank.

1. Install the pilot bushing into the engine crank.
2. Install the seal in the adapter housing with the open side towards the transmission.
3. Remove the original Jeep bearing retainer from the front of the transmission and check to make sure that the new adapter plate will index properly over the front bearing. If the diameter of the bearing does not match the adapter plate, then you have received the wrong adapter.
4. Bolt the new retainer to the front of the adapter plate.
5. The top two holes on the transmission must be elongated to match the adapter plate.
6. Bolt the adapter plate and retainer onto the Chevy bellhousing making sure that the retainer indexes properly into the bellhousing. Using the socket head cap screws, bolt the plate to the bellhousing.
7. Apply RTV silicone to the adapter plate prior to assembly of the transmission.
8. Assemble the transmission to the adapter plate using the 1/2" bolts supplied.

SPECIAL NOTE: The components packaged in this kit have been assembled and machined for specific type of conversions. Modifications to any of the components will void any possible warranty or return privileges. If you do not fully understand modifications or changes that will be required to complete your conversion, we strongly recommend that you contact our sales department for more information. This instruction sheet is only to be used for the assembly of Advance Adapter components. We recommend that a service manual pertaining to your vehicle be obtained for specific torque values, wiring diagrams and other related equipment. These manuals are normally available at automotive dealerships and parts stores.

ADVANCE ADAPTERS INC.

P.O. Box 247, 4320 Aerotech Center Way
Paso Robles, CA 93447

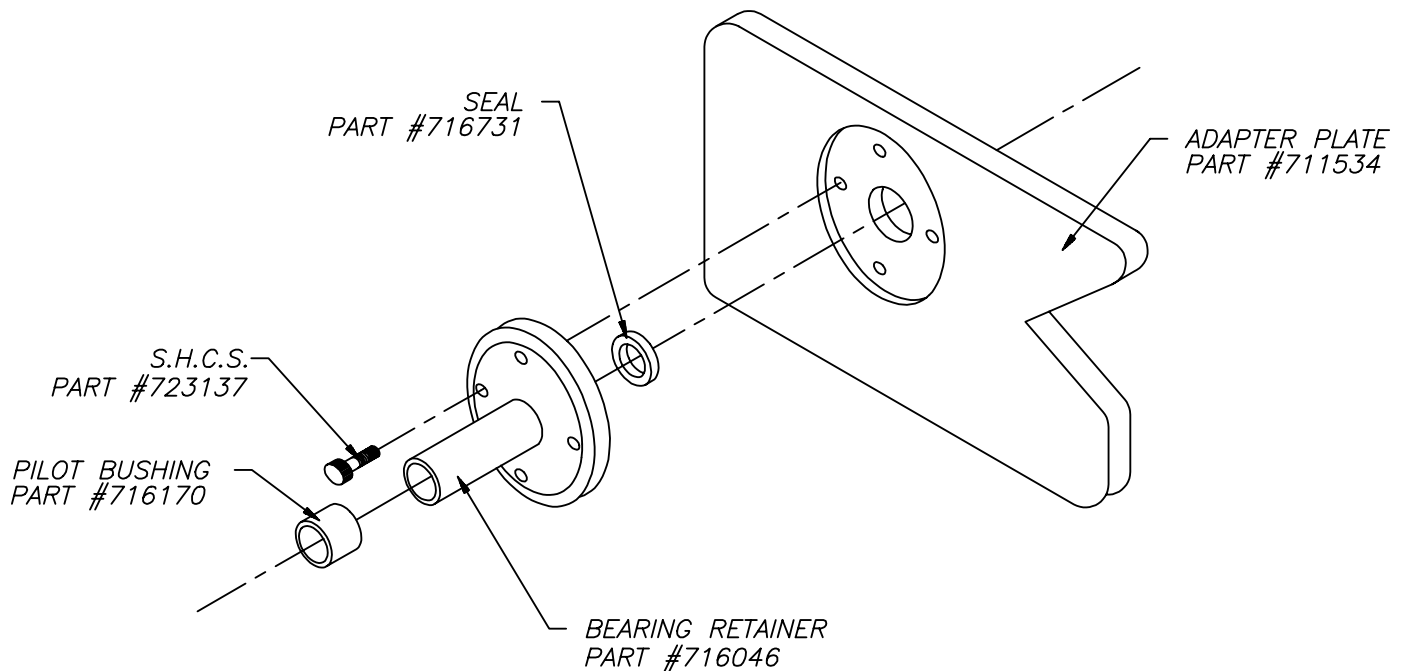
Telephone: (800) 350-2223 Fax: (805) 238-4201

P/N: 712534

PAGE 2 OF 2

Page Rev. Date: 03-04-93

JEEP T176 4 SPEED TRANSMISSION TO CHEVY & BUICK ENGINES



SPECIAL NOTE: The components packaged in this kit have been assembled and machined for specific type of conversions. Modifications to any of the components will void any possible warranty or return privileges. If you do not fully understand modifications or changes that will be required to complete your conversion, we strongly recommend that you contact our sales department for more information. This instruction sheet is only to be used for the assembly of Advance Adapter components. We recommend that a service manual pertaining to your vehicle be obtained for specific torque values, wiring diagrams and other related equipment. These manuals are normally available at automotive dealerships and parts stores.