

ADVANCE ADAPTERS INC.

P.O. Box 247, 4320 Aerotech Center Way

Paso Robles, CA 93447

Telephone: (800) 350-2223 Fax: (805) 238-4201

P/N: 712528

PAGE 1 OF 2

Page Rev. Date: 2/17/15

JEEP T18 4 SPEED TO CHEVY V8 1976-80 (7-1/2" INPUT STICKOUT)

KIT CONSISTS OF:

No.	Qty	Part No.	Description
1.	1	711528	ADAPTER PLATE
2.	1	716046	BEARING RETAINER
3.	1	716158	PILOT BUSHING (EXT. W/.670" I.D.)
4.	1	716732	SEAL (National #471795)
5.	4	723119	5/16"-18 x 1-3/4" S.H.C.S.
6.	2	724328	7/16"-14 x 1-1/4" H.H.C.S.
7.	2	725026	1/2"-13 x 1-1/4" F.H.C.S.
8.	2	725041	1/2"-13 x 2-1/4" S.H.C.S.
9.	1	JP001	JEEP INSTRUCTION MANUAL

Note:

Some Jeep T18s from 1977 to 1979 had an input shaft with a pilot tip measuring 2" long. These transmissions cannot be used due to the lack of clutch spline engagement. These transmissions can use our full bellhousing P/N 712549.

INSTALLATION INSTRUCTIONS:

The input shaft of the stock Jeep 4 speed found in CJ vehicles has a clutch drive spline of 1-1/16"-10. Since the input shaft of the Jeep 4 speed transmission is irregular to a stock shaft, we have provided a special pilot bushing that will need to be installed into the crank of the Chevy motor. Be sure the contact is correct and that the shaft tip reaches the bushing. Also, make sure the splines on the input shaft engage with the clutch disc splines. In some cases, the stock input shaft tip reaches too far into the bellhousing causing the tip to bottom out in the crank. Make sure your transmission has sufficient clearance. If necessary, a portion of the tip can be removed for clearance.

- STEP 1.** Install seal into adapter housing so the open side is towards the transmission.
- STEP 2.** Bolt retainer onto front of plate using the four (4) bolts provided.
- STEP 3.** Install the plate and retainer onto the Chevy bellhousing making sure the diameter of the retainer indexes into the bellhousing bore. *If a 5.125" bellhousing is going to be used, P/N 716078 will need to be used with 716046.*
- STEP 4.** Using the flat head socket cap screw, bolt the plate to the bellhousing. After this is in place, it may be necessary to mark the flat head portion of the bolt for grinding and providing clearance for bolt that overlaps.
- STEP 5.** Before bolting the bellhousing assembly to your T18, you must remove the stock front bearing retainer. Clean the T18 transmission surface so that it is free of debris. Set the bellhousing and adapter onto the transmission. The top two holes of the transmission will require a slight elongation so that a bolt can be used from the transmission through the plate and into the bellhousing. Once elongated, use the bolts provided (1/2"-13 x 2-1/4") to secure the plate on the top, and P/N 724328 on the bottom holes. Apply a thin layer of RTV Blue Silicone to the adapter plate surface. This will eliminate any possible oil leakage between the plate and transmission.

Bellhousing Side



Transmission Side



These counter-sunk holes are not used.

SPECIAL NOTE: The components packaged in this kit have been assembled and machined for specific type of conversions. Modifications to any of the components will void any possible warranty or return privileges. If you do not fully understand modifications or changes that will be required to complete your conversion, we strongly recommend that you contact our sales department for more information. This instruction sheet is only to be used for the assembly of Advance Adapter components. We recommend that a service manual pertaining to your vehicle be obtained for specific torque values, wiring diagrams and other related equipment. These manuals are normally available at automotive dealerships and parts stores.

ADVANCE ADAPTERS INC.

P.O. Box 247, 4320 Aerotech Center Way
Paso Robles, CA 93447

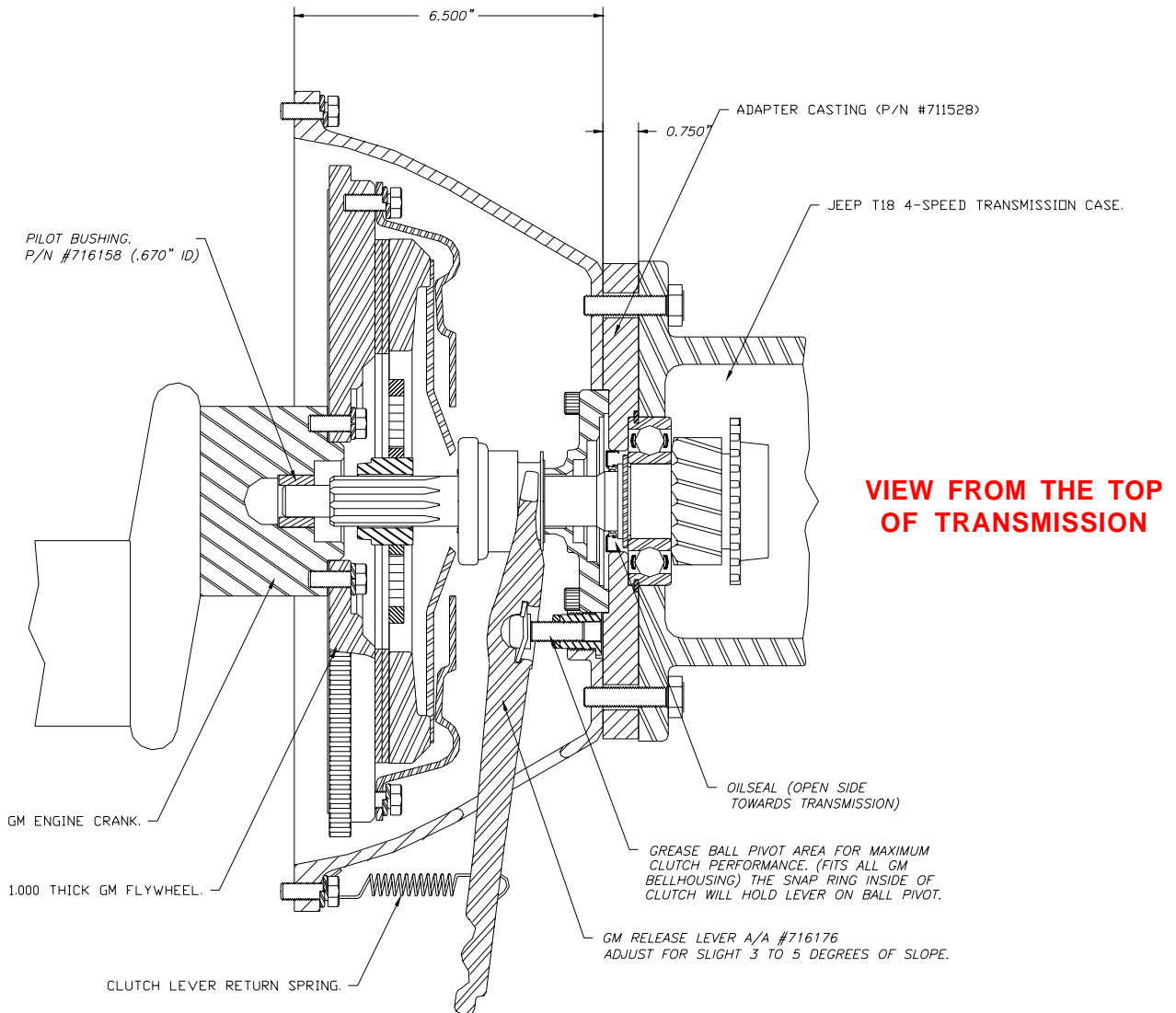
Telephone: (800) 350-2223 Fax: (805) 238-4201

P/N: 712528

PAGE 2 OF 2

Page Rev. Date: 02-14-01

JEEP T18 4 SPEED TO CHEVY V8 1976-80 (7-1/2" INPUT STICKOUT)



SPECIAL NOTE: The components packaged in this kit have been assembled and machined for specific type of conversions. Modifications to any of the components will void any possible warranty or return privileges. If you do not fully understand modifications or changes that will be required to complete your conversion, we strongly recommend that you contact our sales department for more information. This instruction sheet is only to be used for the assembly of Advance Adapter components. We recommend that a service manual pertaining to your vehicle be obtained for specific torque values, wiring diagrams and other related equipment. These manuals are normally available at automotive dealerships and parts stores.